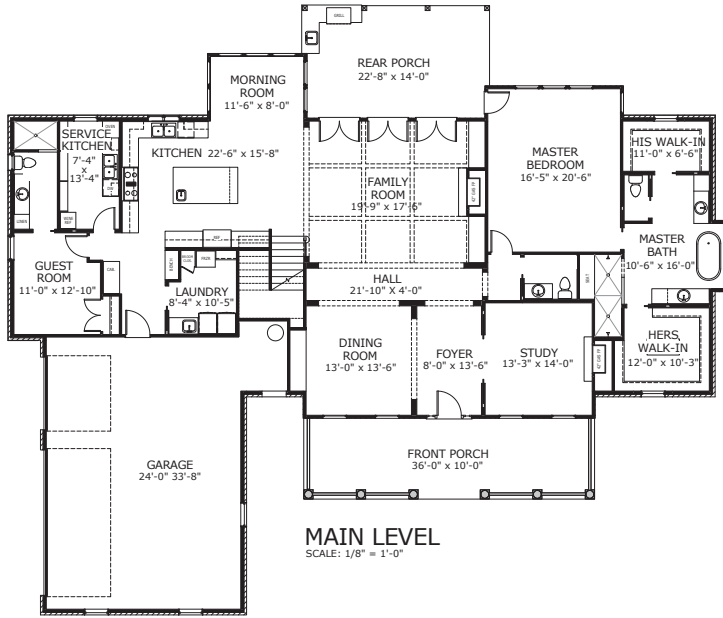
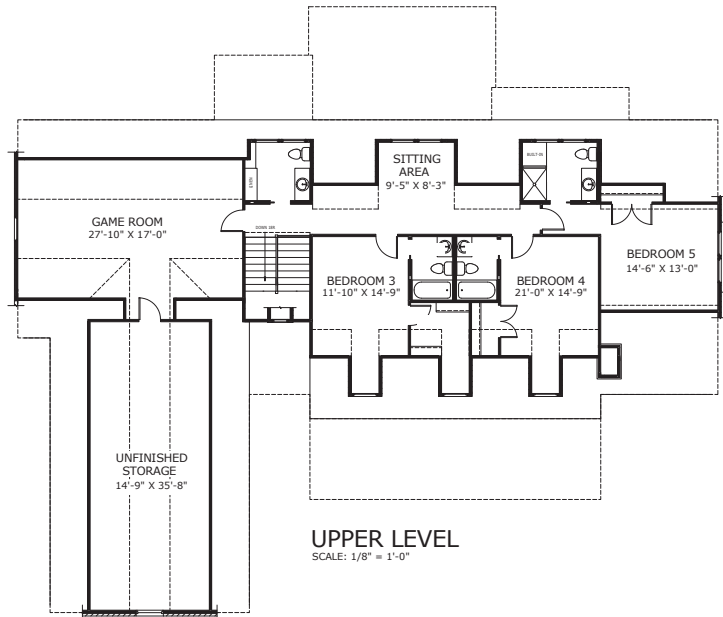


VINING CREEK | HOUSTON, TEXAS



MAIN LEVEL
SCALE: 1/8" = 1'-0"



UPPER LEVEL
SCALE: 1/8" = 1'-0"

CONDITIONED SPACE

Main Level 2,986 SF
Upper Level 1,785 SF

GRAND TOTAL 4,771 SF

UNCONDITIONED SPACE

Garage 889 SF
Front Porch 363 SF
Rear Porch 318 SF
Unfinished Storage 556 SF

GRAND TOTAL 2,127 SF



MORNING STAR BUILDERS LTD
12777 Jones Road #285 | Houston, TX 77070

Phone: 832-304-2310

www.homesbymorningstar.com

